



MA MUSICAL THEATRE COMPANY
CLOTHING & EQUIPMENT REQUIREMENTS

In this pack you will find the following:
Clothes & Equipment List: Women 2023
Clothes & Equipment List: Men 2023
Extra Equipment: All Students
Recommended (non-essential): All Students

THESE ARE ALL ESSENTIAL ITEMS

All clothing should be neutral, without motifs/ words

DANCE and MOVEMENT

Shoes

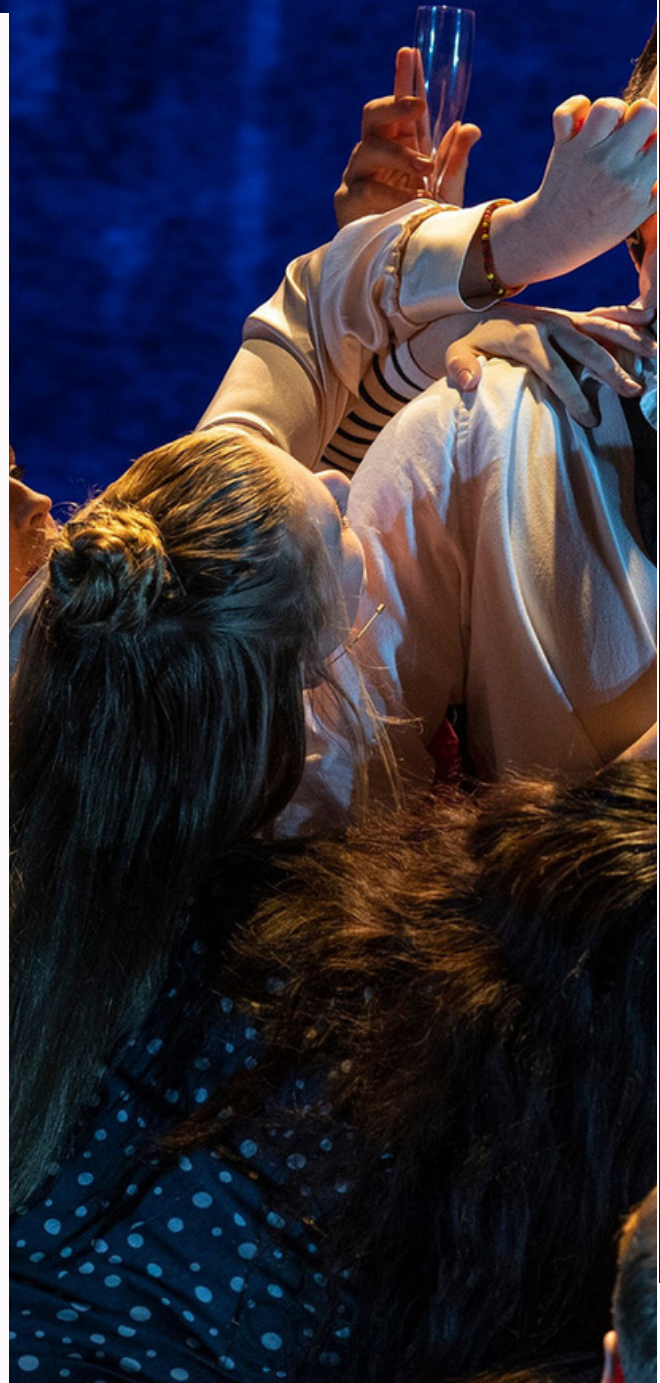
- Pink or Black split-sole leather/canvas ballet shoes with one or two elastics sewn across the top of the foot
- Smart black modern heeled shoes (standard court shoe) with leather sole and /or
- One pair of New Yorkers -skin coloured or black with 2.5" or 3" heel
Highly Recommended: La Duca Shoes black lightweight split sole jazz shoes (preferable) or jazz trainers (Bloch jazz sneakers are not suitable) - laducashoes.co.uk
- Other economical options - these are often listed as stage or character shoes. Examples of these can be found on page 4.
- One pair of black lightweight split sole jazz shoes (no jazz trainers/sneakers)
- One pair of black leather low heeled tap shoes (Oxford style) with Tele-tone taps - full sole, lace up, Tele-tone taps with proper screws.

A recommended variety can be found [here](#).

A more expensive type can be found [here](#).

Clothing

- Multiple Black leotards (including one long/¾ length sleeve)
- Sports bras
- Dance trousers
- Pink or black dance tights (can be footless)
- Black trainer socks



You may get through several sets of dance clothes in a day, so it is essential to have enough for washing/drying/wearing.

Hair elastics, hair pins/grips, hair nets etc. Those with long hair are expected to put their hair up and pinned off the face for dance classes.



THESE ARE ALL ESSENTIAL ITEMS

All clothing should be NEUTRAL without motifs/words

DANCE and MOVEMENT

Shoes

- Black leather or canvas split-sole ballet shoes with one or two elastics sewn across the top of the foot
- One pair of black lightweight split sole jazz shoes (no jazz trainers/sneakers)
- One pair of low-heeled tap shoes (Oxford Style) with Tele-tone taps - full sole, lace up, Tele-tone taps with proper screws:

A recommended variety can be found [here](#).

A more expensive type can be found [here](#).

Clothing

- Fitted t-shirts and/or leotard
- Cycling shorts/dance trousers that allow for movement
- Ballet tights or unitard (recommended from Plume at Dance Direct)
- Black socks
- Flesh-coloured/black jockstrap, otherwise known as a dance belt – compulsory for class, rehearsal and all dance and movement sessions.

Any other dancewear already owned: further jazz and ballet shoes, vest / t-shirt tops, track suits, tights, will be very useful in providing a change for daily classes.

You will get through several sets of dance clothes in a day, so it is essential to have enough for washing/drying/wearing.

ACTING CLASSES AND REHEARSAL PROJECTS

You will need to be prepared to bring in items of clothing appropriate to scenes and characters you may be working on, together with personal belongings and objects of meaning and attachment. You will also need to bring recorded music and sometimes suitable props for scenes or situations. Please ensure that you have access to such items as they will be useful rehearsal tools. Make sure you have access to a variety of formal and informal clothing and accessories, books, music, photographs and other personal effects. If you can play a portable musical instrument, you should bring it with you if possible.

Some of your training will be delivered online either via Zoom or Microsoft Teams. We recommend using a laptop for the best possible user experience however a compatible smartphone will suffice.

Voice

- One hand mirror
- One hair band – for those with long hair
- A dictaphone or similar (mobile phone would be fine)
- Theraband (medium resistance)
- Silicone tube or straw 9-12mm (available on Amazon)

Stationery

- Notebooks for use as journals
- Ring binders for repertoire
- Highlighters
- Pencils/pens

Examples Of Clothing & Equipment detailed on pages 2 and 3


Women's pair of New Yorkers (economical options):

<https://www.dancedirect.com/sdbl124-so-danca-elasticated-gussets-easy-buckle-cross-straps-ballroom-shoes>

<https://uk.blochworld.com/collections/adults-dance-shoes-character/products/ladies-split-flex-leather-character-shoes-black-leather>

<https://uk.blochworld.com/collections/adults-dance-shoes-character/products/ladies-roxie-character-shoes-tan-synthetic-leather>

<https://www.dancedirect.com/sdch98-so-danca-leather-t-strapped-3-inches-heel-character-shoes>



Vocal steamer (blue plastic cup style is acceptable)

Re-useable bottle (to avoid over-using plastic)

Professional Memberships

Whilst not mandatory, we recommend that students register for both Equity, the Actor's Union, and Spotlight.

These companies have an annual membership charge, further information can be found on their respective websites.

Headshots

Students will require headshots for final public productions, including showcase.


These can range in cost and the conservatoire will offer guidance.

Leeds Conservatoire
3 Quarry Hill, Leeds, LS2 7PD

Telephone: +44 (0)113 222 3400

www.leedsconservatoire.ac.uk/contact

LeedsConservatoire

 LeedsMusicDrama

 Leedsconservatoire

